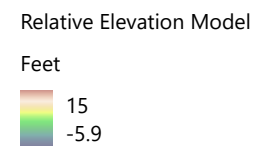


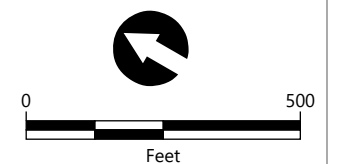
LEGEND:

- Columbia District Parcels
- Floodplain Fill Removal
- Levee Removal
- Zoom Extent
- Existing Levee
- Setback Levee
- Channel Cuts

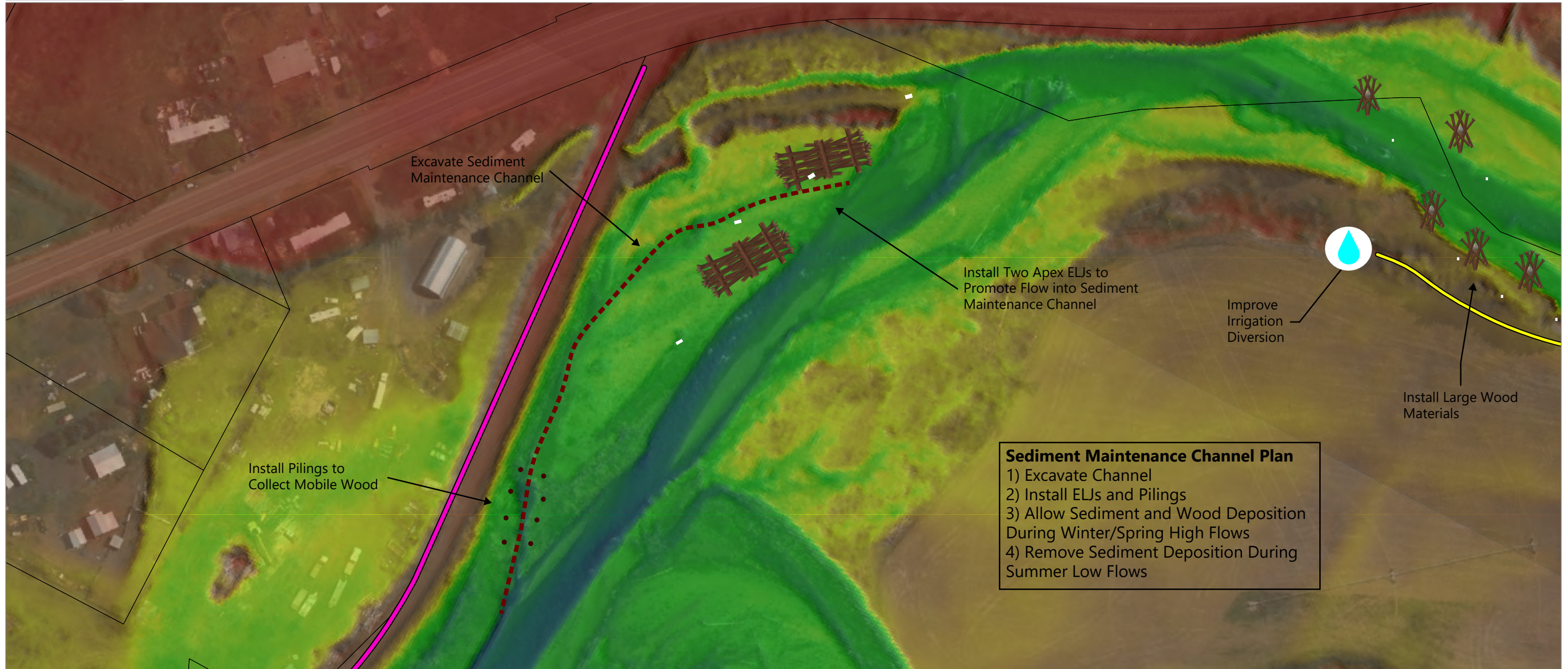


SOURCES:

1. Horizontal datum is WA State Plane South, NAD83, U.S. feet.
2. Vertical datum is North American Vertical Datum of 1988 feet.
3. Hillshade and Relative Elevation developed from topobathymetry data from NV5 Geospatial (NV5 2023).



Publish Date: 2024/04/17, 4:17 PM | User: aferro
 Filepath: Q:\Jobs\Columbia_Conservation_District_0687\Touchet MS-15 and NF-SF\Analysis\NF-SF Width Analysis\Width_Analysis_AF\Width_Analysis_AF.aprx



LEGEND:

- Columbia District Parcels
- Existing Levee
- Setback Levee
- Channel Cuts

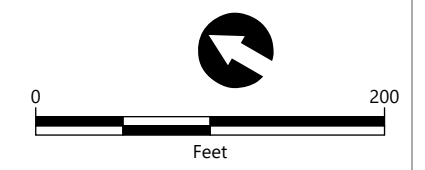
Relative Elevation Model
Feet

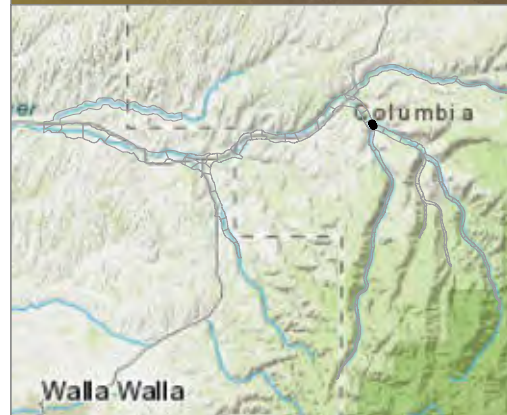
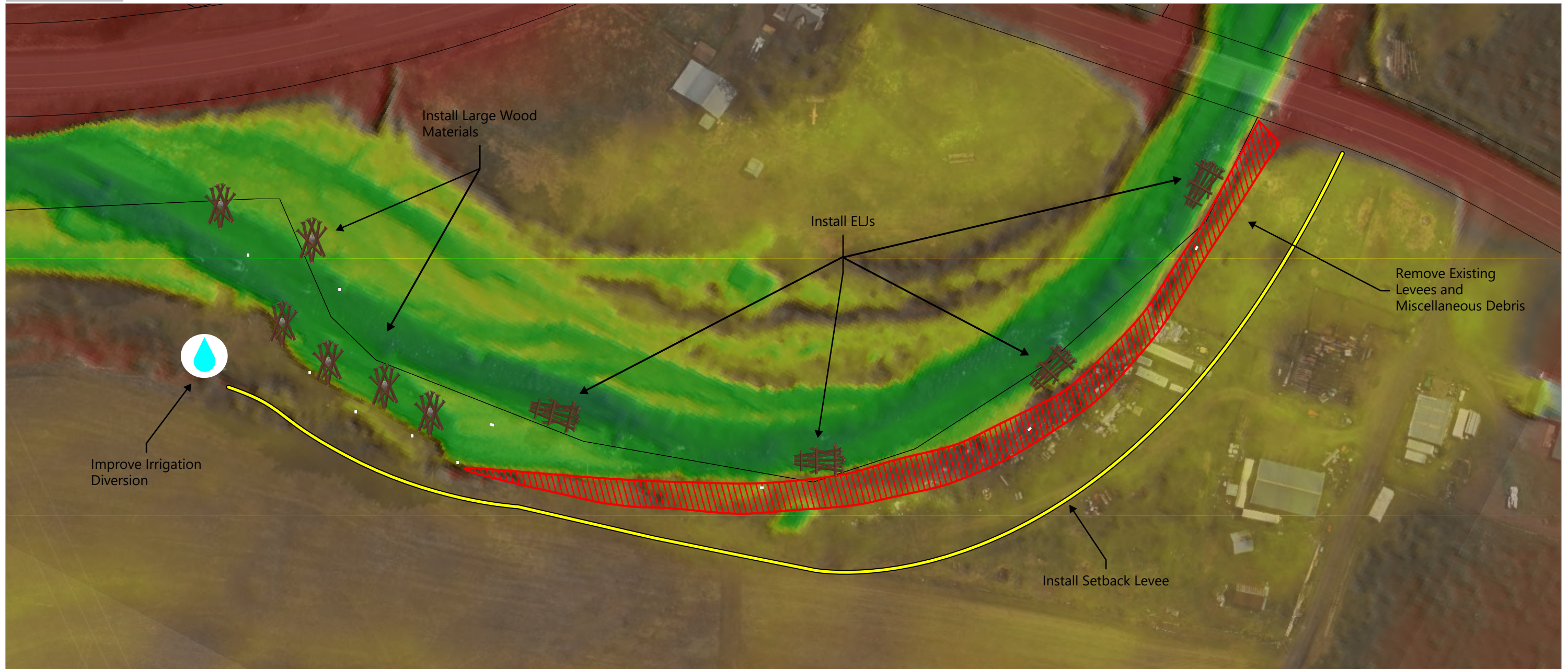
15

-5.9

SOURCES:

1. Horizontal datum is WA State Plane South, NAD83, U.S. feet.
2. Vertical datum is North American Vertical Datum of 1988 feet.
3. Hillshade and Relative Elevation developed from topobathymetry data from NV5 Geospatial (NV5 2023).





LEGEND:

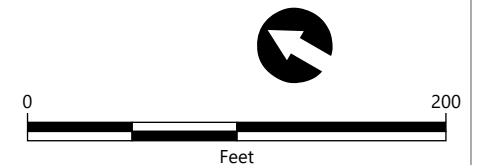
- Columbia District Parcels
- Levee Removal
- Setback Levee

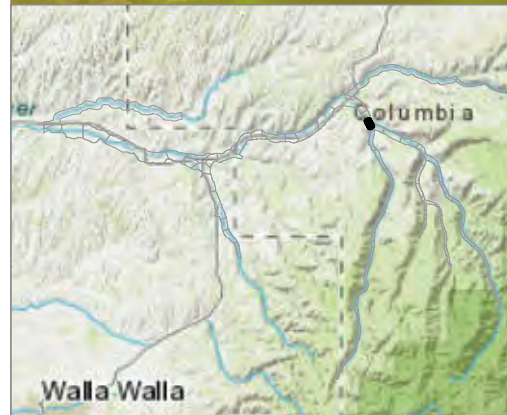
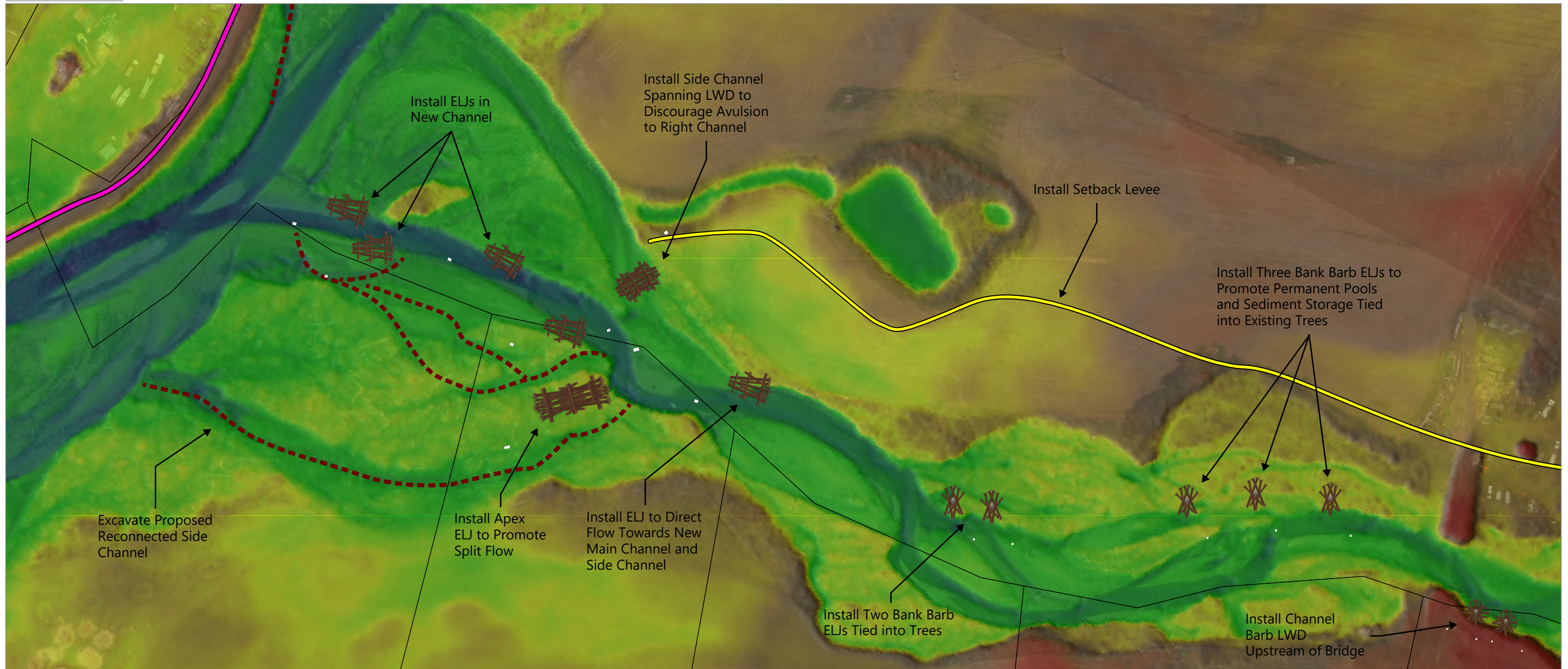
Relative Elevation Model
Feet

- 15
- 5.9

SOURCES:

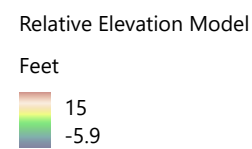
1. Horizontal datum is WA State Plane South, NAD83, U.S. feet.
2. Vertical datum is North American Vertical Datum of 1988 feet.
3. Hillshade and Relative Elevation developed from topobathymetry data from NV5 Geospatial (NV5 2023).





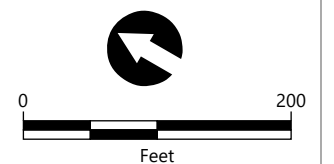
LEGEND:

- Columbia District Parcels
- Existing Levee
- Setback Levee
- Channel Cuts

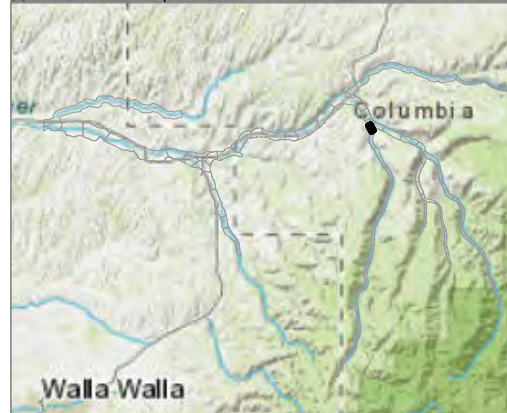
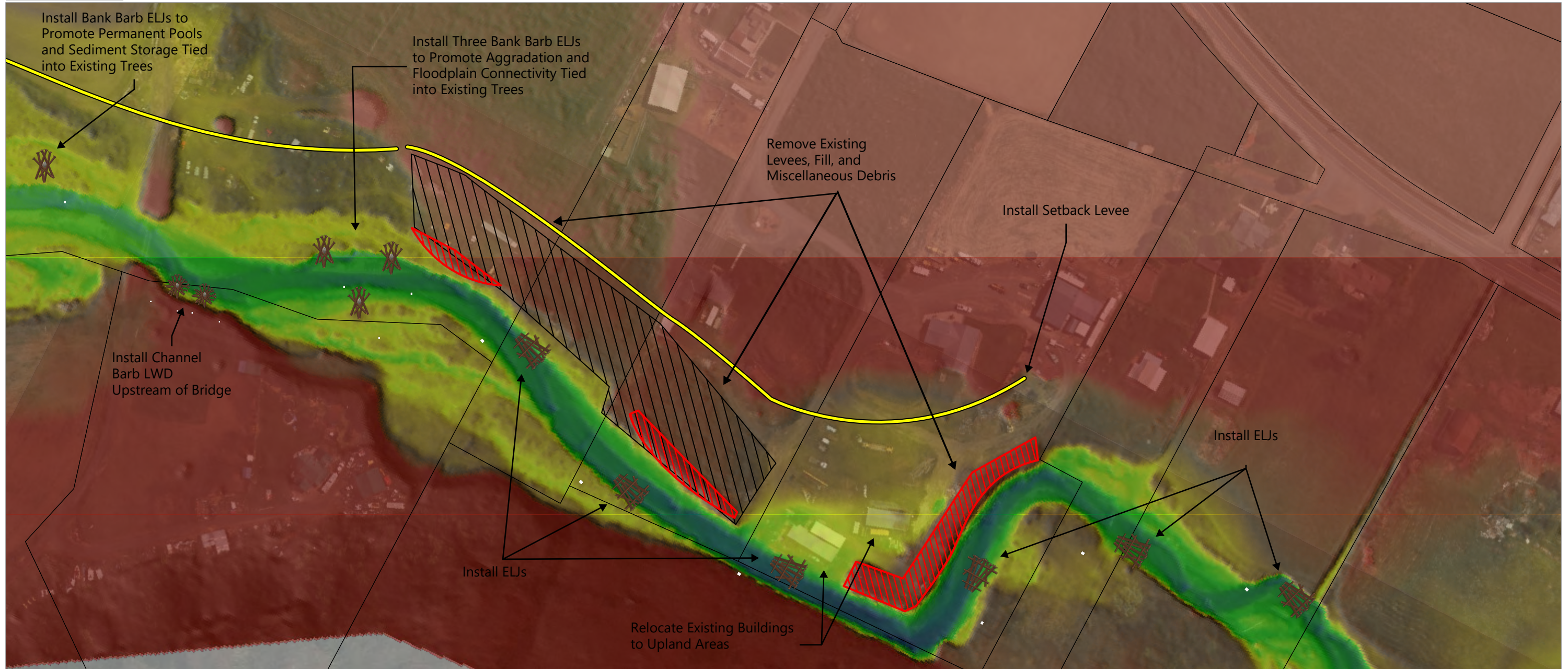


SOURCES:

1. Horizontal datum is WA State Plane South, NAD83, U.S. feet.
2. Vertical datum is North American Vertical Datum of 1988 feet.
3. Hillshade and Relative Elevation developed from topobathymetry data from NV5 Geospatial (NV5 2023).



Publish Date: 2024/05/06, 12:31 PM | User: aferro
Filepath: Q:\Jobs\Columbia_Conservation_District_0687\Touchet MS-15 and NF-SF\Analysis\NF-SF Width Analysis\Width_Analysis_AF\Width_Analysis_AF.aprx



LEGEND:

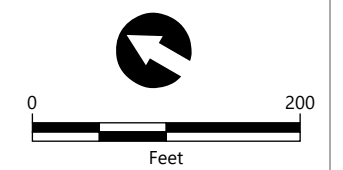
- Columbia District Parcels
- Floodplain Fill Removal
- Levee Removal
- Setback Levee

Relative Elevation Model
Feet

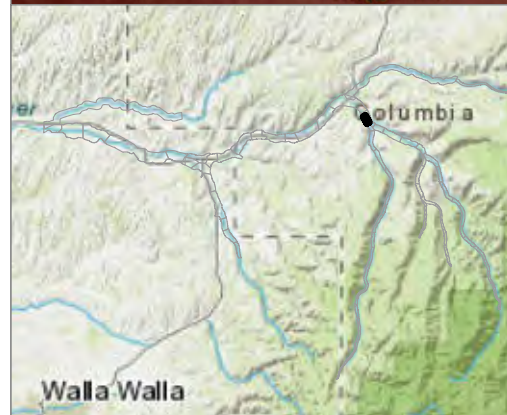
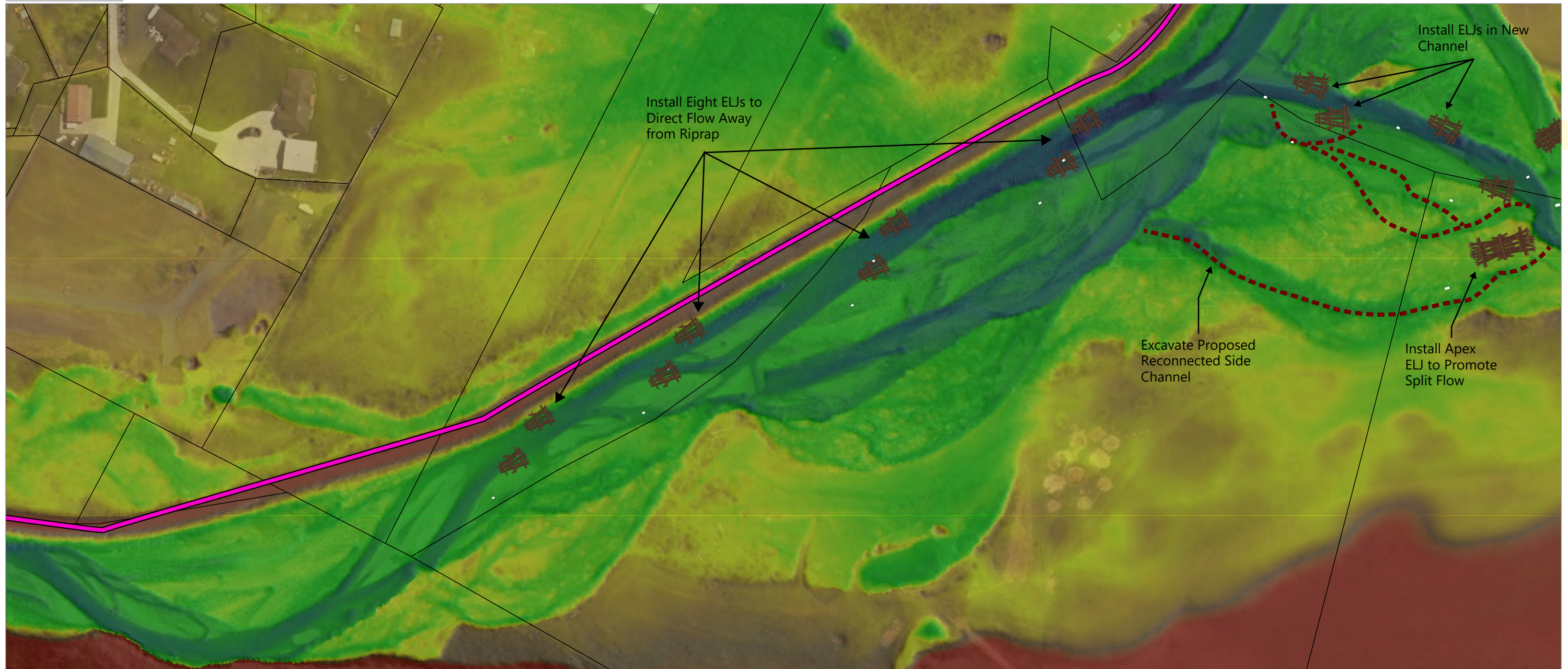
- 15
- 5.9

SOURCES:

1. Horizontal datum is WA State Plane South, NAD83, U.S. feet.
2. Vertical datum is North American Vertical Datum of 1988 feet.
3. Hillshade and Relative Elevation developed from topobathymetry data from NV5 Geospatial (NV5 2023).



Publish Date: 2024/05/06, 12:32 PM | User: aferro
Filepath: Q:\Jobs\Columbia_Conservation_District_0687\Touchet MS-15 and NF-SF\Analysis\NF-SF Width Analysis\Width_Analysis_AF\Width_Analysis_AF.aprx



LEGEND:

- Columbia District Parcels
- Existing Levee
- Channel Cuts

Relative Elevation Model
Feet

15
-5.9

SOURCES:

1. Horizontal datum is WA State Plane South, NAD83, U.S. feet.
2. Vertical datum is North American Vertical Datum of 1988 feet.
3. Hillshade and Relative Elevation developed from topobathymetry data from NV5 Geospatial (NV5 2023).

