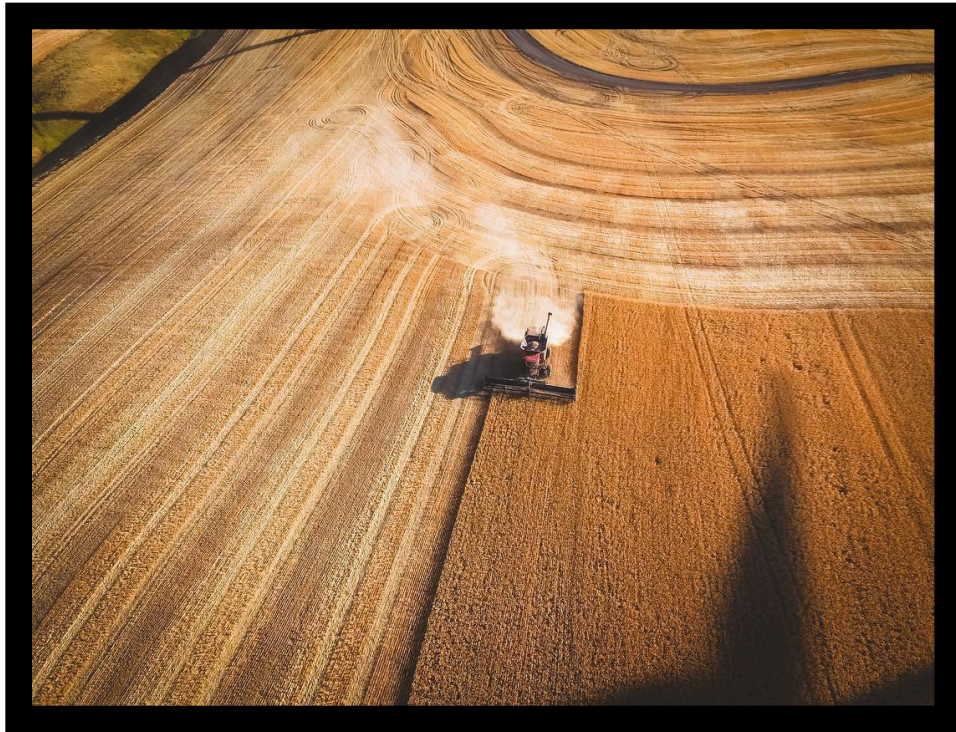


# Voluntary Stewardship Program for Columbia County

Individual Stewardship Plan Survey  
[www.columbiacountyvsp.com](http://www.columbiacountyvsp.com)



## Introduction

The Voluntary Stewardship Program (VSP) is the result of legislative amendments to the Growth Management Act to establish and develop a non-regulatory approach to Critical Area protection within agricultural lands (RCW 36.70A.725). Its goal is to provide agricultural producers more flexibility than the traditional Critical Area protection measures can offer. The legislative intent is to encourage producers to use the flexibility of VSP, allowing all involved producers to create a plan that works for them and their land—this is a not a “one shoe fits all” approach. The flexibility, individuality, and voluntary design of a VSP ensure success in protecting Critical Areas, while promoting agricultural viability and success.

## Instructions

In a combined effort between Columbia County and Columbia Conservation District, we have formatted this Land Use Survey. The VSP Work Group that helped develop the VSP maintained that many of the guidelines are already being met; yet producers would find it beneficial to develop an Individual Stewardship Plan (ISP) as provided in this program. The ISP will greatly help in securing the resources needed to fully implement the VSP. The information contained within the ISP is held as confidential through the Columbia Conservation District.

Thank you for your interest in the VSP. Your involvement will allow us to work together to promote your Agricultural Viability and protect our County-Wide Critical Areas. *Please submit this survey to the Department of Planning and Building (address and contact information on the back).*

Thank you,

Columbia County  
Columbia Conservation District

## Current Land Use

---

1. Do you currently farm or raise animals within Columbia County:  
 YES                       NO (If selected, please discontinue)
2. How many acres of land do you own/lease and actively farm or ranch on?  
 0-50 acres                       50-100 acres                       101-1,000 acres  
 1,001+ acres                       Prefer not to answer
3. What crops are you currently growing or have you previously (between 2011 and now) grown on your land?  
 Barley                       Spring Peas                       Lentils  
 Spring Wheat                       Winter Wheat                       Alfalfa/Hay  
 Beans                       Oilseed Crops                       N/A  
Other – Please describe:
4. What livestock do you currently, or have you previously (between 2011 and now) raised on your land?  
 Dairy Cattle                       Beef Cattle                       Goats  
 Chickens                       N/A  
Other – Please describe:
5. How many years have you been farming or ranching this land?

## Your Crop Practices (If you do not farm your land, proceed to the next section)

---

6. Do you participate in any Conservation Cover practices? (Definition – establishing and maintaining long-term, permanent vegetative cover.)

Yes, I do:         Implemented before 07/2011    Implemented after 07/2011

No, I do not:     I am interested in learning more  
                      I am not interested in learning more

7. Do you participate in Integrated Pest Management practices? (Definition—a site-specific combination of pest prevention, pest avoidance, pest monitoring, and pest suppression strategies)

Yes, I do:         Implemented before 07/2011    Implemented after 07/2011

No, I do not:     I am interested in learning more  
                      I am not interested in learning more

8. Do you participate in any Cover Crop practices? (Definition—grasses, legumes, and leafy ground cover plants for seasonal vegetative cover)

Yes, I do:         Implemented before 07/2011    Implemented after 07/2011

No, I do not:     I am interested in learning more  
                      I am not interested in learning more

9. Do you participate in having a Riparian Forest Buffer? (Definition—an area predominantly of suitable trees and/or shrubs planted along a stream, river, lake, or other water body)

Yes, I do:         Implemented before 07/2011    Implemented after 07/2011

No, I do not:     I am interested in learning more  
                      I am not interested in learning more

10. Do you participate in Residue and Tillage Management/Reduced Till? (Definition—managing the amount, orientation, and distribution of crop and other plant residue on the soil surface year-round)

Yes, I do:         Implemented before 07/2011    Implemented after 07/2011

No, I do not:     I am interested in learning more  
                      I am not interested in learning more

11. Do you participate in Nutrient Management? (Definition—managing the amount, source, placement, and timing of plant nutrients and soil amendments)

Yes, I do:         Implemented before 07/2011    Implemented after 07/2011

No, I do not:     I am interested in learning more  
                      I am not interested in learning more

12. Do you participate in Fencing? (Definition—a constructed barrier to protect animals or people)

Yes, I do:         Implemented before 07/2011     Implemented after 07/2011

No, I do not:     I am interested in learning more  
                      I am not interested in learning more

**Your Livestock Practices**  
**(If you do not ranch your land, proceed to the next section)**

---

13. Do you participate in having a Riparian Forest Buffer? (Definition—an area predominantly of suitable trees and/or shrubs planted along a stream, river, lake, or other water body)

Yes, I do:         Implemented before 07/2011     Implemented after 07/2011

No, I do not:     I am interested in learning more  
                      I am not interested in learning more

14. Do you participate in Fencing? (Definition—a constructed barrier to protect animals or people)

Yes, I do:         Implemented before 07/2011     Implemented after 07/2011

No, I do not:     I am interested in learning more  
                      I am not interested in learning more

15. Do you participate in Stream Habitat Improvement and Management? (Definition—maintain, improve, or restore physical, chemical and biological functions of a stream and its associated riparian zone)

Yes, I do:         Implemented before 07/2011     Implemented after 07/2011

No, I do not:     I am interested in learning more  
                      I am not interested in learning more

16. Do you participate in Livestock Grazing? (Definition—managing the harvest of vegetation with grazing and/or browsing animals and soil amendments)

Yes, I do:         Implemented before 07/2011     Implemented after 07/2011

No, I do not:     I am interested in learning more

I am not interested in learning more

17. Do you participate in having a Watering Facility? (Definition—a means of providing a controlled water source to livestock or wildlife)

Yes, I do:  Implemented before 07/2011  Implemented after 07/2011

No, I do not:  I am interested in learning more  
 I am not interested in learning more

### **Follow Up Questions**

---

18. Are you aware of any identified/classified Critical Areas on your land?

Yes  No  Unknown  Prefer not to answer

19. Would you be interested in a Critical Area assessment? County and Conservation District staff would visit your land with you to assist in determining the presence of Critical Areas?

Yes  No

20. Are there any additional Conservation Practices you participate in that weren't listed within the survey? *Please list them here, with the year implemented, in the space below.*

21. For the Conservation Practices you currently participate in, what are your funding sources?

Federal Funding  State Funding  
 Private Funding  Mixed Funding

22. What WRIA is your land located in? (Check all that apply)

Tucannon WRIA 35

Touchet WRIA 32

Lower Snake WRIA 33

Unsure: may require technical assistance to identify

23. Through this survey, what would you like to gain? Are you interested in learning about funding options, available technical assistance, or other Conservation Practices available to you? *Please be as detailed as possible. Use the following space to answer the question.*

Please complete the following page with requested contact information. Once your survey is processed, County and Conservation District staff will review your responses and contact you as follow up. From this survey, an ISP can be developed for you at your discretion.

Name: \_\_\_\_\_

Mailing address: \_\_\_\_\_

Phone: \_\_\_\_\_

Email: \_\_\_\_\_

Location of farmed/ranched lands:

Thank you for taking the time to complete this survey, the first step in identifying and documenting the resource management efforts being applied by our local producers. While we review this information, we may reach out with additional questions regarding your submittal. Once we have completed review, we will follow up with you to discuss your interest in pursuing the development of an ISP for your operation.

If you would like to schedule an on-site inspection for any technical assistance (Critical Area identification, WRIA identification, etc.) please contact us below.

Columbia County Planning and Building  
114 South 2<sup>nd</sup> Street, Dayton, WA 99328  
Dena Martin  
Planning Manager  
509-382-4676  
Dena\_martin@co.columbia.wa.us

Columbia Conservation District  
202 South 2<sup>nd</sup> Street, Dayton, WA 99328  
Aneesha Dieu  
District Manager  
509-382-4273 Ext. 4  
ad-ccd@daytonwa.net

*This survey and the Voluntary Stewardship Program have been endorsed by the Work Group Committee, made up of local farmers, ranchers, and public officials. For more information, please contact us or visit [www.columbiacountyvsp.com](http://www.columbiacountyvsp.com).*